

**Subir Kumar Basu** is a Kolkata-based architect and urban designer with over three decades of experience to shape major townships, high-rise luxury complexes, and affordable housing projects.

**Past projects**



Sun Indu Prova, Tollygunge



Sun Bright Residency, Tollygunge



Sun Bright House, Hilland Park

**Developer**  
**Sunbright Developers Private Limited**  
 9A, Raja Basanta Roy Road,  
 Kolkata 700026

**CD RERA COLLECTION ACCOUNT**  
**Sunbright Developers Private Limited**  
**Central Bank of India**  
 (Branch: Ballygunge)  
 A/C No: 5713815612  
 IFSC: CBIN0280090



**Location map**



Designed by Adva Communique (www.advacommunique.com)

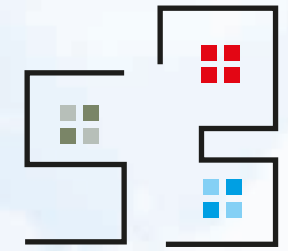
**Site**  
 199 School Road, Dhamaitala, Ward No -25,  
 Sonarpur, Pin - 700151

**98307 09078**  
 gangulybiswadeep@yahoo.com  
 WBRERA/P/SOU/2024/001939 (www.rera.wb.gov.in)

*Disclaimer: The contents of this material are conceptual and may/may not form part of the final product. We reserve the right to change and modify the contents and shall not be liable to anyone for the changes/improvements made, subject to the rules and regulations of West Bengal Real Estate Regulation Act.*

**A Stunning G+5  
 Landmark Rising on  
 Southern Bypass!**

**Comfort. Convenience. Community.**



**SUN BRIGHT  
 SOUTHERN**



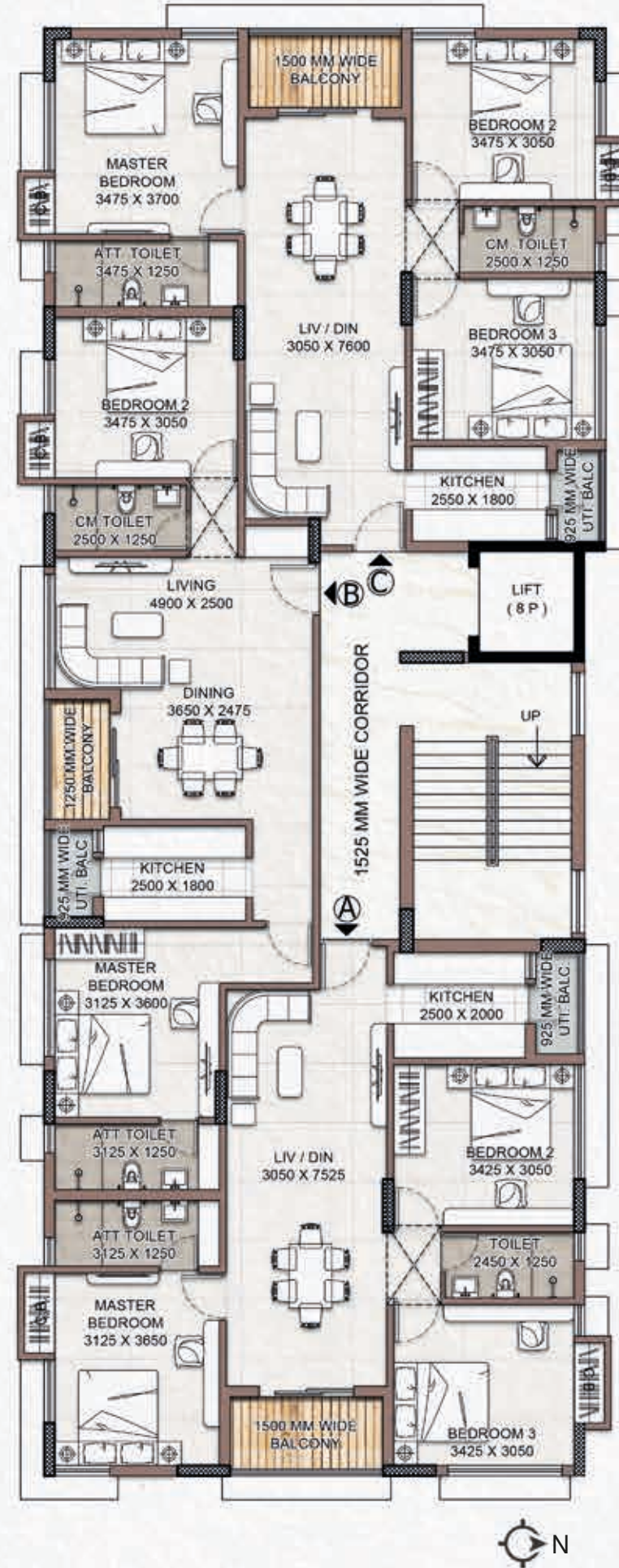
## Upper Ground Floor Plan



## Lower Ground Floor Plan



## Typical Floor Plan (1st -5th)



## Specifications

**Building**  
RCC Frame Structure

**External Finish**  
Blending of Cement Base Paint & Other Decorative Cement Finish

**Stair Case**  
Spacious Stair Case in Kota Stone

**Interior Walls**  
Brick Walls with plaster of Paris over cement plaster with putty

**Flooring**  
Vitrified/Ceramic tiles (Kajaria or others) in the bedroom, kitchens, toilets, living room & balcony

**Kitchen**  
Counter with granite slab, one stainless steel sink, ceramic tiles upto two feet height

**Bathroom**  
Glazed tile upto door height, hot and cold water in the master bathroom, white coloured European style WC and basin silver ware or equivalent make, elegant CP fittings of ESCO/jaguar/Hindware or equivalent make

**Doors**  
Main door and other ply flash doors

**Electrical**  
Copper finolex wiring in concealed conduits, sufficient light/fan points in master bed room and living/dining room, AC point in master bed room with Havels/Legrand/Crabtree semi modular switches

**Windows**  
Aluminium sliding windows

**Common Facilities**  
Lift of big boss or equivalent make, decorative finish of lift area

**Paints**  
Berger, Asian Paints, Nerolac, Dulux

## Area statement

Floor	Flat No.	Area of Flat (Super built-up)	Carpet area	Floor	Flat No.	Area of Flat (Super built-up)	Carpet area
1st	1A	1288 Sq.ft.	853 Sq.ft.	4th	4A	1288 Sq.ft.	853 Sq.ft.
1st	1B	1095 Sq.ft.	737 Sq.ft.	4th	4B	1095 Sq.ft.	737 Sq.ft.
1st	1C	1298 Sq.ft.	872 Sq.ft.	4th	4C	1298 Sq.ft.	872 Sq.ft.
2nd	2A	1288 Sq.ft.	853 Sq.ft.	5th	5A	1288 Sq.ft.	853 Sq.ft.
2nd	2B	1095 Sq.ft.	737 Sq.ft.	5th	5B	1095 Sq.ft.	737 Sq.ft.
2nd	2C	1298 Sq.ft.	872 Sq.ft.	5th	5C	1298 Sq.ft.	872 Sq.ft.
3rd	3A	1288 Sq.ft.	853 Sq.ft.	UG	COMM	2550 Sq.ft.	1734 Sq.ft.
3rd	3B	1095 Sq.ft.	737 Sq.ft.				
3rd	3C	1298 Sq.ft.	872 Sq.ft.				

